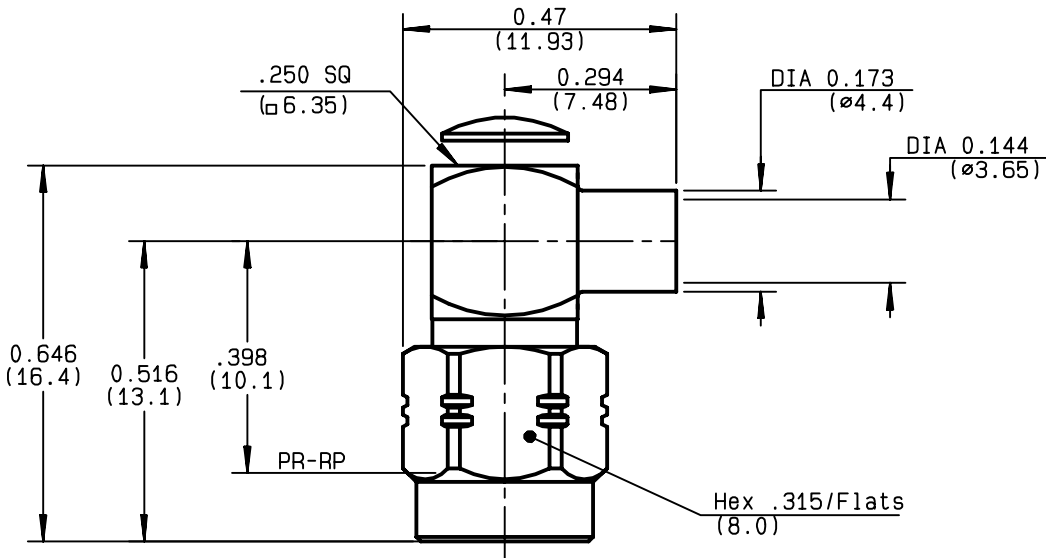


**RIGHT ANGLE PLUG SOLDER TYPE
CABLE .141 - PACK. 100**

R124.154.126
SERIES SMA-COM



NOMINAL IMPEDANCE	50 Ω	CABLES : KS 2
FREQUENCY RANGE	0-12.4 GHz	RG 402
TEMPERATURE RATING	-65/+105 °C	
V.S.W.R	1.10 + .01 x F(GHz)Maxi	
RF INSERTION LOSS	0.05 √F(GHz) dB Maxi	
VOLTAGE RATING	500 Veff Maxi	
DIELECTRIC WITHSTANDING VOLTAGE	1000 Veff Mini	
INSULATION RESISTANCE	5000 MΩMini	OTHERS CHARACTERISTICS
HERMETIC SEAL	NA Atm.cm ³ /s	CABLE RETENTION 270 N Mini
LEAKAGE (pressurized only)	NA	CENTER CONTACT RETENTION
MECHANICAL DURABILITY	100 Cycles	Axial force - mating end 27 N Mini
WEIGHT	4.1 gr	Axial force - opposite end 27 N Mini
SPECIFICATION		Torque NA cm.N Mini
		RECOMMENDED TORQUES
		Mating 60 cm.N
		Panel nut NA cm.N
		Clamp nut NA cm.N

CONNECTOR PARTS	MATERIALS	FINISH
BODY	BRASS	SILVER 5 OVER COPPER 0.5
OUTER CONTACT	BRASS	SILVER 5 OVER COPPER 0.5
CENTER CONTACT	BRASS	SILVER 5 OVER COPPER 0.5
INSULATOR	PTFE	-
GASKET	-	-
OTHERS PIECES	BERYLLIUM COPPER	BBR 2

(all values are given)
in micrometers

ISSUE	CREATION DATE	FILE PART-NUMBER
9918C00	27/01/1997	96-0104-731



RAMBERT

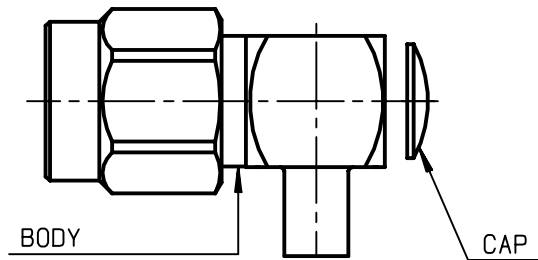
The information given here is subject to change without notice.
Design changes may be in order to improve the product .

Connect to the future



R124.154.126

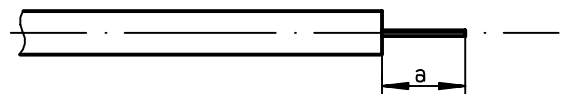
ISSUE **9918C00** SERIES **SMA-COM**



We recommend a cable thermal preconditioning before assembly.

①

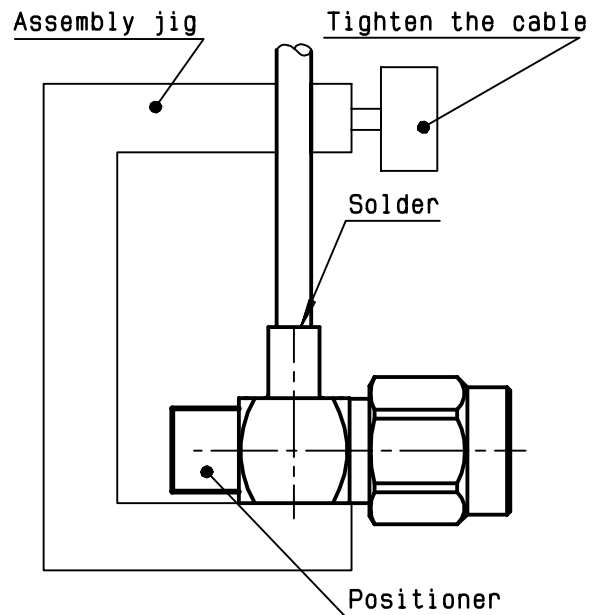
Strip the cable .
 Stripping tool R 282.053.000
 Positioner R 282.067.000



Stripping	a	b	c	d	e
inch	0.125	0	0	0	0
mm	3.17				

②

2-1 Introduce the cable into the connector body until it stops.
 Place the sub assembly into the assembly jig R 282.740.000 (or equivalent) with positioner R 282.744.201 and tighten it.
 2-2 Solder the body onto the cable.
 2-3 Let the assembly cool down before removing it from the jig .



③

3-1 Solder inner conductor.
 3-2 Put the cap in its place.
 3-3 Press cap flush or slightly below surface of body assembly.

